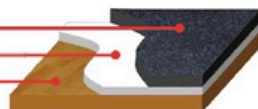




- 100% Recycled Polyester Topcloth
- Tri-Layer Performance Backing with Moisture Barrier
- Floor Surface



## Protect Your Wood!

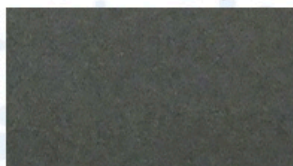
### Key Features

- Versatile
- Only 8.2 Pounds per Tile!
- Extremely Durable and Stain Resistant
- Appearance and feel of Carpet
- Incredible Acoustic Properties
- Highly Slip Resistant
- Used to Protect Virtually Any Floor Surface

### Specifications

- Fiber: 100% U.V. Stable Recycled PET
- Size: 35" x 70"
- Pile Height: 1/8"
- Total Height: 1/4"
- Total Thickness: 1/4"
- Total Weight: 74.5oz YD<sup>2</sup> +/- 7%
- Dye Method: Solution Dyed
- Warranty: 7 Years
- ASTM E 648-10 - Class 1
- Primary Backing: Proprietary Thermoplastic Blend with a laminated fiberglass layer for dimensional stability

Stock Color Options:  
Medium Gray



## Gym Floor Cover Tiles

Heavy Duty, Not Heavy Weight



Custom Logos Available



[www.protexmatting.com](http://www.protexmatting.com)